

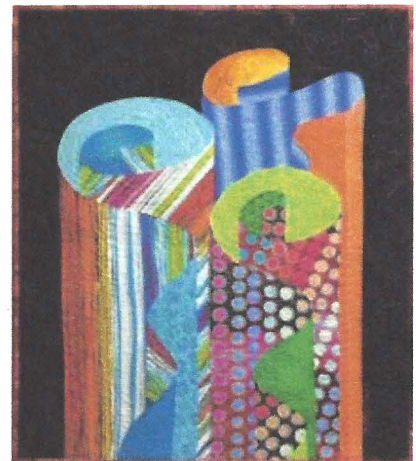
Scroll-A-Luscious

Machine Appliqué workshop with Cara Gulati

3-D Wrapping Paper Scrolls! Using stripes and tone-on-tone fabrics to create this illusion of the third dimension!

Supply List

- Scroll-A-Luscious pattern, provided at the workshop
- Freezer paper
- Pencil(s), eraser and sharpener
- Pins
- Masking Tape: Natural color ONLY. No colored tape.
- Paper scissors and Fabric scissors
- Washable Glue stick (I like the Avery purple glue sticks)
- Invisible thread
- Empty bobbin
- Iron and ironing surface
- Light Box
- Sewing Machine that does a zigzag stitch and your manual
- Open toed sewing foot or see-through sewing foot for your machine
- Extension table for your sewing machine if you have one
- OPTIONAL for cutting down the background fabric:
Rotary cutter and mat (11" X 17" min.) and See through ruler: 6" x 24"
- Fabric:



This is an art quilt with three scroll shapes. Each scroll has "two" sides, one side is a stripe and the other side is a solid color, represented with a gradation (a selection of tone-on-tone fabrics from light to dark). The best results visually occur when you have great contrast between your stripe colors and your solid color gradation. For example, if your stripe is mostly purple, choose a color gradation such as orange. If your stripe has multiple colors in it, choose a color gradation that is a color that doesn't occur in the stripe. Each scroll has its own stripe/gradation combination. If you repeat fabrics in multiple scrolls, your design might appear difficult to see.

Keep in mind that this is an art quilt. We are using a pattern, but your color gradation fabric choices will probably vary from the sample as far as where the light, medium and dark colors will go. You may want to bring more of a selection of fabrics than those that are listed here in case you want to change your mind or you feel a little unsure about your choices. I am providing you with a guideline that makes the scrolls pop. Some of these pieces are small and will create leftovers. However, if you only bring small pieces, you can't change your mind about where a color goes. I'll be going over each person's fabric selections while you are preparing your freezer paper patterns so each student gets personal attention.

- Scroll A (on the left in front)
 - $\frac{3}{4}$ yard Stripe
 - $\frac{1}{4}$ yard each Light, Light Medium, Dark Medium and Dark of one color
- Scroll B (behind other two scrolls)
 - $\frac{1}{2}$ yard Stripe
 - $\frac{1}{4}$ yard each Light and Medium of one color
- Scroll C (on the right in front)
 - $\frac{5}{8}$ yard Stripe
 - $\frac{1}{4}$ yard each Light, Medium and Dark of one color
- $\frac{7}{8}$ yard Black background (If you choose not to bring this you will need to bring a design wall.)

Questions? Email me at cara@doodlepress.com or call me.

Cara Gulati

Doodle Press * PO Box 6640 * San Rafael, CA 94903 * 415-662-2121 * Doodlepress.com